



CHESTER P. VOISIN
President
JOHN PIZZOLATTO
Vice-President
CLIFTON J. STOUFFLET
Secretary

STEPHEN HORNSBY
VINCENT CELESTIN
CHARLES BROWN, SR.
TERI CHATAGNIER
WILBERT THOMAS
KENNETH ELLENDER

P.O. Box 630 • Houma, LA 70361
Tel: (985) 879-2495 • Fax: (985) 879-2283
www.tpcw.org

CECILIA P. NORMAN
Chief Administrative Officer

MICHAEL A. SOBERT
General Manager

BOIL WATER ADVISORY

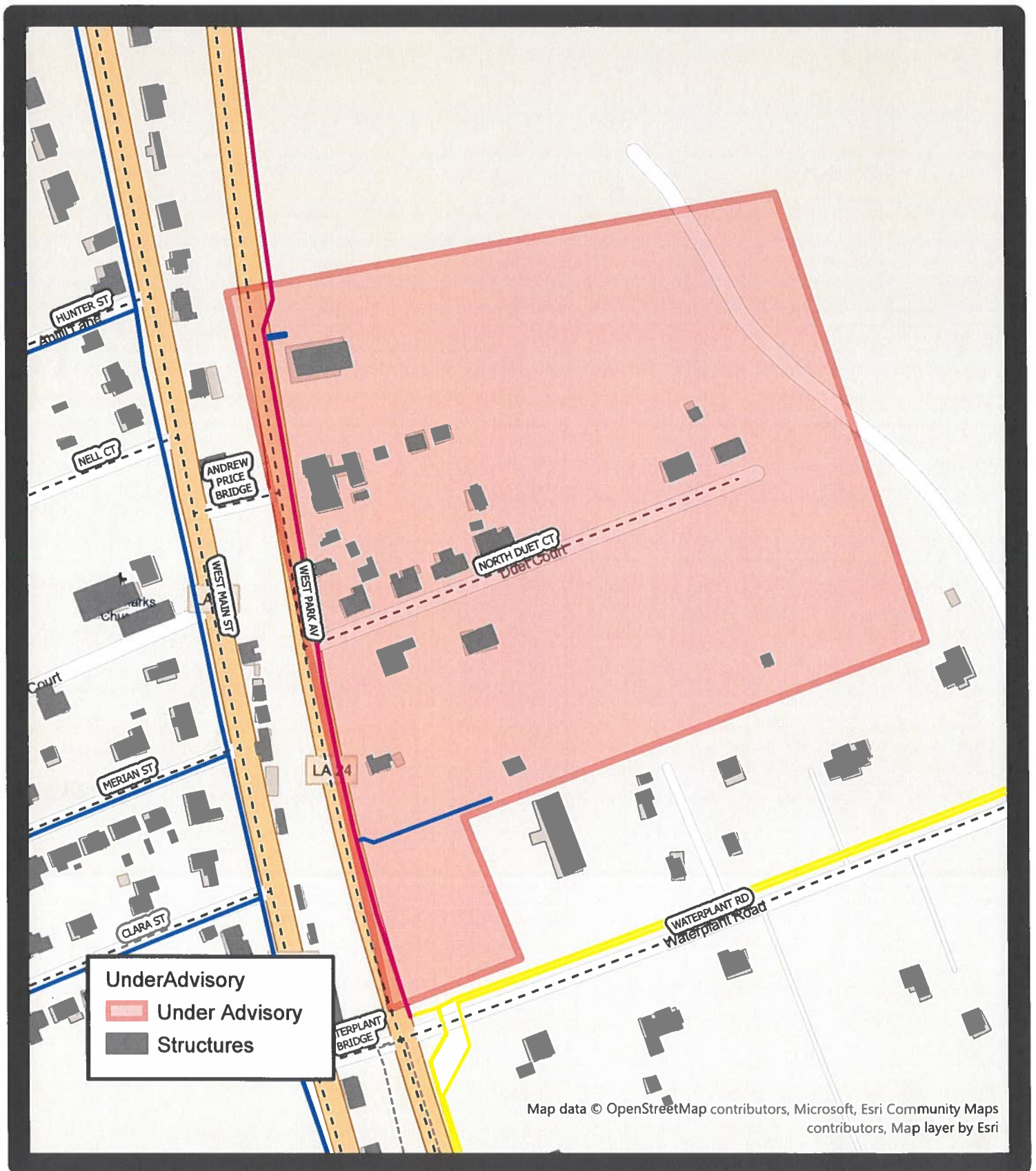
February 25, 2022
BWA 2022-02-08

In accordance with the Louisiana Department of Health's Sanitary Code and out of an abundance of caution, the 10 customers located on Park Ave, Hwy 24, from Waterplant Road up to Andrew Price School, including all customers located on Duet Lane are affected by this Boil Water Advisory. Please see the attached map for a more detailed graphic representation of the Boil Water Advisory area. Customers are advised to boil their water to a hard rolling boil for at least 1 minute prior to consumption. Please visit www.ldh.la.gov or www.tpcw.org for more specific detail information concerning what to do when a Boil Water Advisory has been issued.

Planned maintenance to an existing main waterline required the water to be turned off which resulted in the water pressure falling below the required minimum requiring this BWA.

Remember to boil your water in a hard rolling boil for at least 1 minute prior to human consumption. Please like, share, and follow us on Facebook for information concerning your drinking water supplier and the results of water quality sampling on testing of your water.

MICHAEL A. SOBERT
GENERAL MANAGER



Boil Water Advisory

EST. 10 CUSTOMERS

FROM WATERPLANT RD ALONG WEST PARK AVE TO 1829 WEST PARK AVE INCLUDING NORTH DUET CT

FEBRUARY 25, 2022

BWA_2022_02-08

